



<http://bit.ly/1zNvs9R>



CALIFORNIA COMMUNITY COLLEGES

**Doing What MATTERS™**

FOR JOBS AND THE ECONOMY

**The Launchboard**  
**Using Data to Evaluate and Showcase your Program**

MAY 1, 2015



# Welcome Fellow CTE Faculty!



Who am I ?

CTE/STEM/STEAM



Renah.com





# Why is CTE the center of so much attention now?

Why are we **here**?

Diversity

Inclusion



Equity



# How do CTE faculty impact California And how do we tell our story



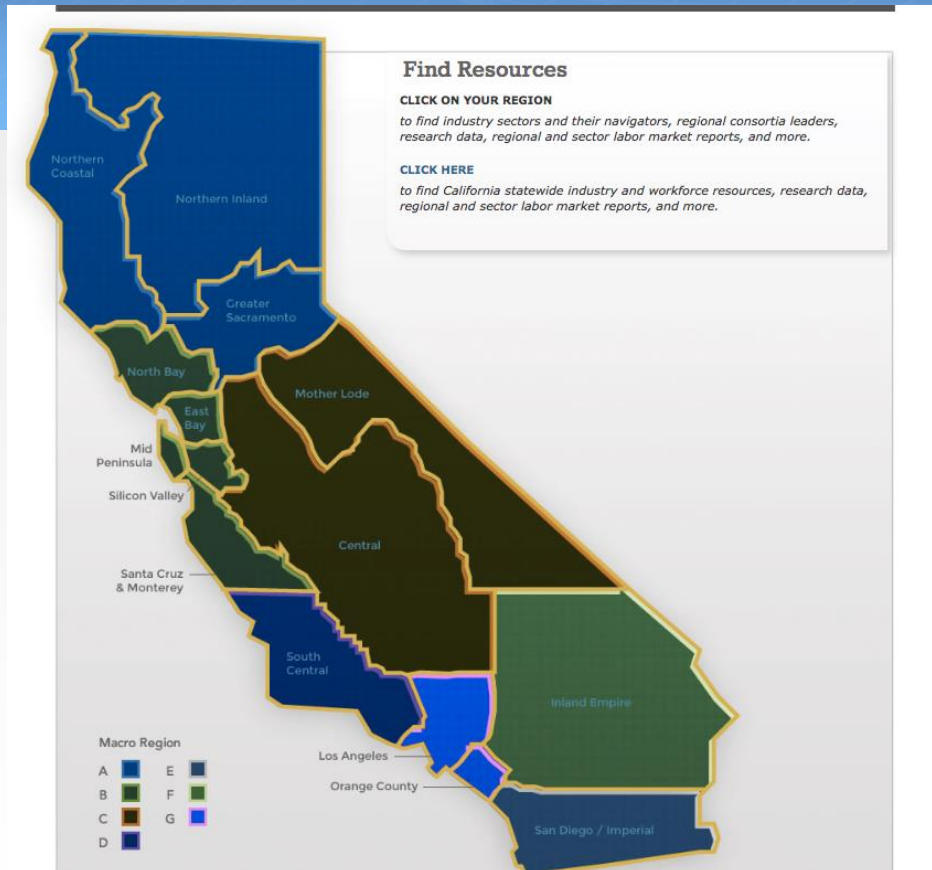


# What is Doing What Matters for Jobs and the Economy?





# Resource Map - by Macro Regions



7 Macro Regions

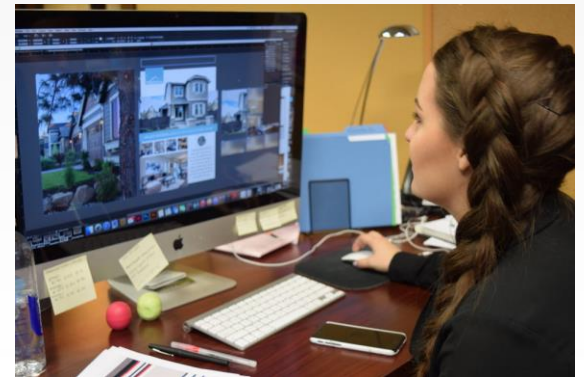
Interactive map on website

Includes Resources by  
Sector  
Region  
College



# Doing What Matters – The Goals

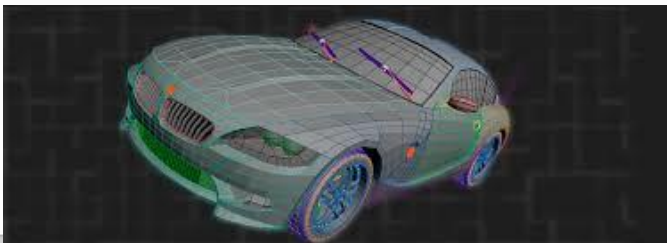
- Supply in-demand skills for employers
- Create relevant career pathways and stackable credentials
- Promote student success
- Get Californians into open jobs





# Doing What Matters – The Strategy

- **Give Priority for jobs and the economy**
- **Make Room for jobs and the economy**
- **Promote Student Success**
- **Innovate for jobs and the economy**







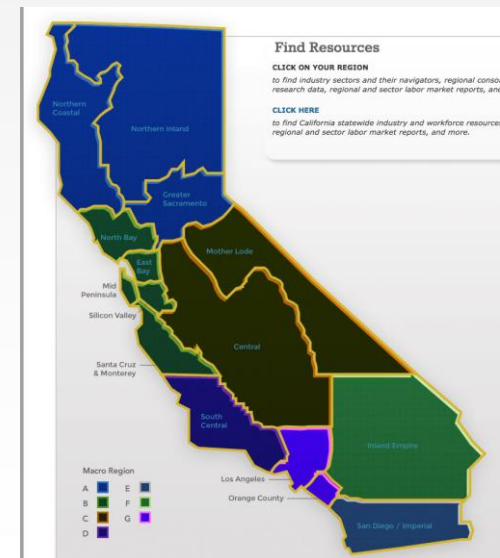
# 10 Priority or Emerging Sectors

- **Advanced Manufacturing**
- **Advanced Transportation & Renewables**
- **Agriculture, Water & Environmental Technologies**
- **Energy (Efficiency) & Utilities**
- **Global Trade & Logistics**
- **Health**
- **Information & Communication Technologies (ICT)/Digital Media**
- **Life Sciences/Biotech**
- **Retail/Hospitality/Tourism 'Learn and Earn'**
- **Small Business**



# California is Divided into 7 Regions

- **Region A** – Northern Inland, Northern Coastal, Greater Sacramento
- **Region B** - SF/San Mateo, East Bay, Silicon Valley, North Bay Santa Cruz/Monterey
- **Region C** - Central Valley, Mother Lode
- **Region D** - South Central Coast
- **Region E** - San Diego/Imperial
- **Region F** – Inland Empire
- **Region G** – Los Angeles, Orange County





# Who are your



# contacts?

## Resources by Region and Sector

- Regional Chairs/Vice Chairs for each Region (12 total)
- Statewide Sector Navigator - 1 per Sector (10 total)
- Deputy Sector Navigators – assigned by region (63 total)
- Technical Assistance Providers – (20 total)

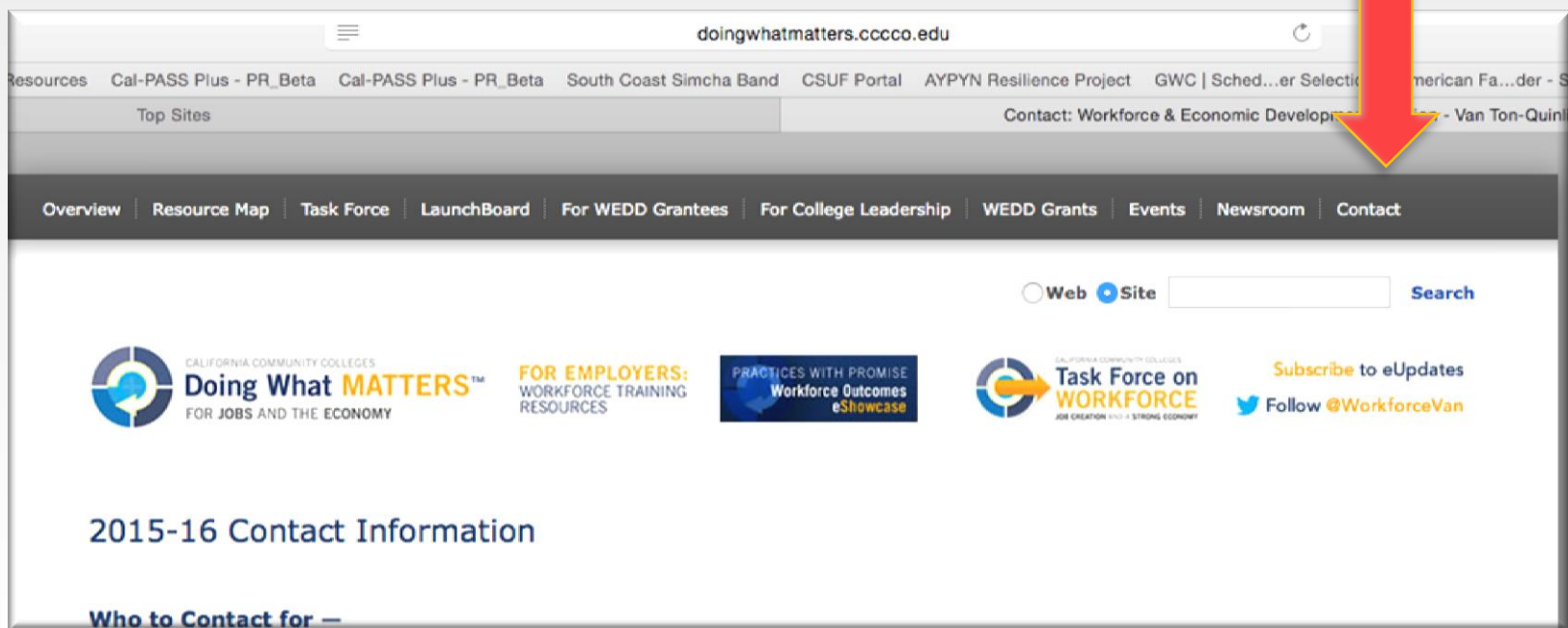


# Resources by Region and Sector – Even More!

## **Technical Assistance Providers**

- **Contract Ed**
  - **Curriculum Approval Practices**
  - **Data Tools**
  - **Apprenticeships**
  - **CA Career Café**
  - **Centers of Excellence**
  - **Internships**
  - **Communications**
  - **Career Pathways**
  - **Leadership and Coordination**
  - **Pathways**
- (20 total)**

# How do I reach my DWM contacts?



The screenshot shows the website [doingwhatmatters.cccco.edu](http://doingwhatmatters.cccco.edu). The browser address bar is at the top. Below it is a navigation bar with links: Resources, Cal-PASS Plus - PR\_Beta, South Coast Simcha Band, CSUF Portal, AYPYN Resilience Project, GWC | Sched...er Selectio, American Fa...der - S. Below this is a "Top Sites" section with a link to "Contact: Workforce & Economic Development - Van Ton-Quin". A red arrow points to this link. Below the navigation bar is a menu with links: Overview, Resource Map, Task Force, LaunchBoard, For WEDD Grantees, For College Leadership, WEDD Grants, Events, Newsroom, Contact. Below the menu is a search bar with "Web" and "Site" radio buttons, a search input field, and a "Search" button. Below the search bar are several logos and links: "CALIFORNIA COMMUNITY COLLEGES Doing What MATTERS™ FOR JOBS AND THE ECONOMY", "FOR EMPLOYERS: WORKFORCE TRAINING RESOURCES", "PRACTICES WITH PROMISE Workforce Outcomes eShowcase", "CALIFORNIA COMMUNITY COLLEGES Task Force on WORKFORCE JOB CREATION AND A STRONG ECONOMY", "Subscribe to eUpdates", and "Follow @WorkforceVan". Below the logos is the heading "2015-16 Contact Information" and a sub-heading "Who to Contact for —".

Information is by Region and Sector, including emails and phone numbers



# What is the Launchboard

- The LaunchBoard provides information to California community colleges and feeder K-12 school districts on the effectiveness of CTE programs
- Data from many sources are now in one place
- You can look at data by college, program, and academic year
- Every college and CTE program is in the Launchboard



# What is in the Launchboard

- **Student characteristics**, progress, and completion from the CCCCO database (loaded three times a year)
- **Wage data** from Employment Development Department (loaded once a year)
- **Employment outcomes** from the CTE Outcomes Survey (loaded once a year)
- **Labor market information** from EMSI (loaded once a year)
- **Local information** such as participation in articulated courses or soft-skills training (loaded continuously), CATEMA



# How can I use the Launchboard?

- Show WHAT YOU DO BEST in your programs
  - Internships
  - Articulation
  - Diverse student population
  - Certificate or degree completers
  - Skills Builders
  - Pathways
  - Course Completions
  - Employment and Wages after taking your courses
    - AND MORE....





## LaunchBoard<sup>1.0</sup> Data-Backed Decisions

The CTE LaunchBoard, a statewide data system supported by the California Community Colleges Chancellor's Office and hosted by PASS Plus, provides data to California community colleges and their feeder K-12 school districts on the effectiveness of CTE programs. This information is intended to facilitate local, regional and statewide conversations about how to improve student transitions from 12 to college and on to the workforce. Try out a [demo](#) of the LaunchBoard.

### LaunchBoard Features

The LaunchBoard includes several tools to support collecting and viewing information on student outcomes in CTE.

#### Program Snapshot

The Program Snapshot section includes program information and student outcomes that are grouped into categories such as enrollments, milestones, credentials, employment, and alignment with regional labor market demand.

#### Common Metrics

The Common Metrics section enables colleges to upload and view information on 34 indicators used to track progress on the California Community College Chancellor's Office's Doing What Matters framework.

#### CCPT Tab

The California Career Pathways Trust (CCPT) tab is a voluntary tool intended to foster conversations within CCPT grant consortia by bringing together information on grant outcomes and activities in one, easy-to-access location.

#### CTE Outcomes Survey Tool

The CTEOS Reporting Tool is intended to make Career and Technical Education Outcomes Survey (CTEOS) responses more broadly available to faculty and administrators.

#### Contract Ed Tool

The Contract Ed Tool allows colleges to gather information on contract education participants.

#### Program Review Tool (coming Soon)

The Program Review Tool supports local program review processes by providing information on supply and demand, program milestones, and employment outcomes.

## 6 Tabs

- Program Snapshot
- Program Review
- Common Metrics
- CCPT
- CTE Outcomes Survey
- Contract Ed



# Program Snapshot

## College

REGION TOTAL - Central Valley - North ▼

## Programs

SECTOR - Agriculture, Water & Environmental Technologies ▼

Include TOP 6

## Academic Year

2012-2013 ▼

Refresh

PRINT THE SNAPSHOT



5 YEAR TREND



REGION



STATE

Enrollments	▼
Capacity	▼
Support	▼
CTE Program Persistence	▼
Milestones	▼
Alignment	▼
Credentials	▼
Employment	▼
Regional Labor Market Information	▼

\* In order to protect the identity of individual students, asterisks are displayed when fewer than ten students are in the data set.

# Program Snapshot- Each Tab has DATA



College

STATEWIDE TOTAL

Programs

Nursing (123000)

Include TOP 6

Academic Year

2012-2013

Refresh

PRINT THE SNAPSHOT

5 YEAR TREND

REGION

STATE

Enrollments

Capacity

Support

CTE Program Persistence

Milestones

Alignment

Credentials

	Selected Year	5 Year Average	5 Year Change	5 Year Trend
<p>▶ <b>Locally issued certificates</b></p> <p><a href="#">Explain Methodology</a></p>	534	536	- %	=
<p>▶ <b>Noncredit certificates</b></p> <p><a href="#">Explain Methodology</a></p>	415	189	120 %	↑
<p>▶ <b>Chancellor's office approved certificates</b></p> <p><a href="#">Explain Methodology</a></p>	1,272	1,703	-25 %	↓
<p>▶ <b>Associate's degrees</b></p> <p><a href="#">Explain Methodology</a></p>	5,469	5,864	-7 %	↓
<p>▶ <b>External credentials</b></p> <p><a href="#">Explain Methodology</a>   <a href="#">Explain Missing Data</a>   <a href="#">Upload Data</a></p>				





# Program Snapshot- Data is Disaggregated



Noncredit certificates		415	189	120 %	↑
<b>Gender</b>					
Male		35	28	25 %	↑
Female		376	159	136 %	↑
Unknown		*	*	*	*
<b>Ethnicity</b>					
Black or African American		68	36	89 %	↑
American Indian or Alaska Native		*	*	*	*
Filipino		25	15	67 %	↑
Asian		42	16	163 %	↑
Hispanic / Latino		181	62	192 %	↑
Two or More Races		*	*	*	*
Native Hawaiian or Other Pacific Islander		*	*	*	*
Unknown / Non-Respondent		20	19	5 %	↑
White		70	38	84 %	↑
<b>Age</b>					
19 or Less		12	11	9 %	↑
20 to 24		102	43	137 %	↑
25 to 29		83	30	177 %	↑
30 to 34		49	24	104 %	↑
35 to 39		50	18	178 %	↑
40 to 49		51	36	42 %	↑
50 +		67	27	148 %	↑
<b>DSPS</b>					
DSPS		*	*	*	*
Not DSPS		412	187	120 %	↑

- Gender
- Ethnicity
- Age
- DSPS
- EOPS



# Program Snapshot- Look at DATA over 5 years

College

Programs

Academic Year

College x

Administration of Justice (210500)

2012-2013

Refresh

Include TOP 6

PRINT THE SNAPSHOT



5 YEAR TREND



REGION



STATE

Enrollments				
	Selected Year	5 Year Average	5 Year Change	5 Year Trend
<b>Distinct students</b> <a href="#">Explain Methodology</a>	2,063	2,214	-7 %	↓
<b>Full time equivalent students (FTES) - Credit</b> <a href="#">Explain Methodology</a>	449	532	-16 %	↓
<b>Full time equivalent students (FTES) - Noncredit</b> <a href="#">Explain Methodology</a>	0	0	0 %	==
Capacity				▼
Support				▼
CTE Program Persistence				▼
Milestones				▼
Alignment				▼
Credentials				▼
Employment				▼



## Program Snapshot- Look at DATA compared to the Region



College

Programs

Academic Year

College x

Administration of Justice (210500)

2012-2013

Refresh

Include TOP 6

PRINT THE SNAPSHOT



5 YEAR TREND



REGION



STATE

### Enrollments

	Selected Year	Regional Total	Comparison	Trend
▶ <b>Distinct students</b> <a href="#">Explain Methodology</a>	<b>2,063</b>	<b>3,816</b>		
▶ <b>Full time equivalent students (FTES) - Credit</b> <a href="#">Explain Methodology</a>	<b>449</b>	<b>867</b>		
▶ <b>Full time equivalent students (FTES) - Noncredit</b> <a href="#">Explain Methodology</a>	<b>0</b>	<b>0</b>		

### Capacity



# Program Snapshot- Look at DATA compared to the State



College

College x

Programs

Administration of Justice (210500)

Academic Year

2012-2013

Refresh

Include TOP 6

PRINT THE SNAPSHOT



5 YEAR TREND



REGION



STATE

## Enrollments

	Selected Year	State Total	Comparison	Trend
<p>▶ <b>Distinct students</b></p> <p><a href="#">Explain Methodology</a></p>	<b>2,063</b>	<b>129,999</b>		
<p>▶ <b>Full time equivalent students (FTES) - Credit</b></p> <p><a href="#">Explain Methodology</a></p>	<b>449</b>	<b>22,756</b>		
<p>▶ <b>Full time equivalent students (FTES) - Noncredit</b></p> <p><a href="#">Explain Methodology</a></p>	<b>0</b>	<b>0</b>		

Capacity

Support

CTE Program Participation



# How Do I use the Program Snapshot

- Understand your student population
- See if students are persisting in CTE and if they are skills builders or complete a certificate or degree
- See if students are becoming employed and understand their wages
- Obtain all of your labor market information in one place
- See where you are doing well and where you might concentrate efforts





# What about labor market data

## 4 Tools in ONE PLACE

- **EDD – Employment and retention**
- **CTE Employment Outcomes Survey**
  - Employment, wage gains, annual salaries
- **EMSI**
  - Regional Data –
    - people employed by occupation, projected job openings, median annual salary
- **Salary Surfer** – median annual salary for degree and certificate holders



# What are the Common Metrics?

- These are student outcomes. Doing What Matters grantees pick 3-5 of these each year to work on in a collaborative effort

Middle School Cluster

Transition From Middle School to High School

High School Cluster

Transition from High School to College Cluster

Community College Cluster

General Education and Transfer Progress Cluster

Community College Transition to Workforce Cluster

Workforce Progress Cluster

\* In order to protect the identity of individual students, asterisks are dis



# Common Metrics- High School CTE Outcomes

High School Cluster <span style="float: right;">▲</span>				
	Selected Year	5 Year Average	5 Year Change	5 Year Trend
<b>▶ MP 4. Completed one course in high school within a CTE pathway</b> <a href="#">Explain Methodology</a>	<b>6,325</b>	<b>15,460</b>	<b>-59 %</b>	
	Selected Year	5 Year Average	5 Year Change	5 Year Trend
<b>▶ MP 5. Completed two or more courses in high school within a CTE pathway</b> <a href="#">Explain Methodology</a>	<b>3,070</b>	<b>6,665</b>	<b>-54 %</b>	
	Selected Year	5 Year Average	5 Year Change	5 Year Trend
<b>▶ MP 6. Completed a CTE articulated course</b> <a href="#">Explain Methodology</a>   <a href="#">Explain Missing Data</a>				
	Selected Year	5 Year Average	5 Year Change	5 Year Trend
<b>▶ MP 6a. Successfully completed a CTE dual enrollment course or credit by exam, with receipt of transcribed credits</b> <a href="#">Explain Methodology</a>   <a href="#">Explain Missing Data</a>   <a href="#">Upload Data</a>				
	Selected Year	5 Year Average	5 Year Change	5 Year Trend
<b>▶ MP 7. Completed a program in high school within a CTE pathway</b> <a href="#">Explain Methodology</a>   <a href="#">Explain Missing Data</a>				



# Common Metrics- Community College Outcomes

## Community College Cluster

	Selected Year	5 Year Average	5 Year Change	5 Year Trend
▶ <b>MP 15. Completed two courses in the same CTE Pathway</b> <a href="#">Explain Methodology</a>	1,208	1,167	4 %	
	Selected Year	5 Year Average	5 Year Change	5 Year Trend
▶ <b>MP 16. Retention rate between Fall and Spring within a CTE pathway</b> <a href="#">Explain Methodology</a>	26 %	27 %	-1 %	
	Selected Year	5 Year Average	5 Year Change	5 Year Trend
▶ <b>MP 17. Completed a non-CCCCO-approved certificate within a CTE pathway</b> <a href="#">Explain Methodology</a>	739	965	-23 %	
	Selected Year	5 Year Average	5 Year Change	5 Year Trend
▶ <b>MP 18. Completed a CCCCCO-approved certificate within a CTE pathway</b> <a href="#">Explain Methodology</a>	126	80	57 %	



# What is the Employment Outcome Survey

- This is a voluntary survey that your college can do to get data on your specific students.
- This data is pulled into the launchboard
- The CTE OS Tool provides easy to read tables on student responses

Select College

Academic Year

2012-2013

Cohort

Completers

Programs

Administration of Justice (210500)

Run Report



Print Visible

Export Report

Cohort Responses Education **Job Status** Job Changes

Impact of coursework on employment (Multiple responses allowed so totals may exceed 100%)

Current employment status

	Number of responses	Number in Sample	College % of total students who responded to question	Statewide % of total students who responded to question
Employed at one job	20	22	91 %	67 %
Employed at more than one job	*	22	9 %	9 %

Relationship of current job to field of study

	Number of responses	Number in Sample	College % of total students who responded to question	Statewide % of total students who responded to question
Very close - my current job is in the same field as my coursework and training	15	22	68 %	38 %
Close - I used what I learned in my coursework and training even though I am not working in the same exact field	5	22	23 %	18 %
Not close - my studies and training are not at all related to my current job	*	22	9 %	45 %

Job search outcomes

	Number of responses	Number in Sample	College % of total students who responded to question	Statewide % of total students who responded to question
Yes, and I found a job	7	22	32 %	27 %
No, I was already employed when I finished my courses and training	10	22	45 %	25 %
No, I was not looking for employment after I finished my courses and training	*	22	9 %	10 %
Not applicable as I am still pursuing my studies	*	22	14 %	19 %



## Other Launchboard Tools

- CCPT Tab – a voluntary tab for grantees on the California Pathways Trust Grant
- Contract Ed tab – a tool for Contract Ed leaders to add their students into the Launchboard by each Training Event held.
- Program Review Tool (Breakout Tommorrow) – A great tool with easy to read information useful for program review



# Program Review Example 1



## Program Review Tool

CTE Program Area

Student Categories

Select Specific Reports

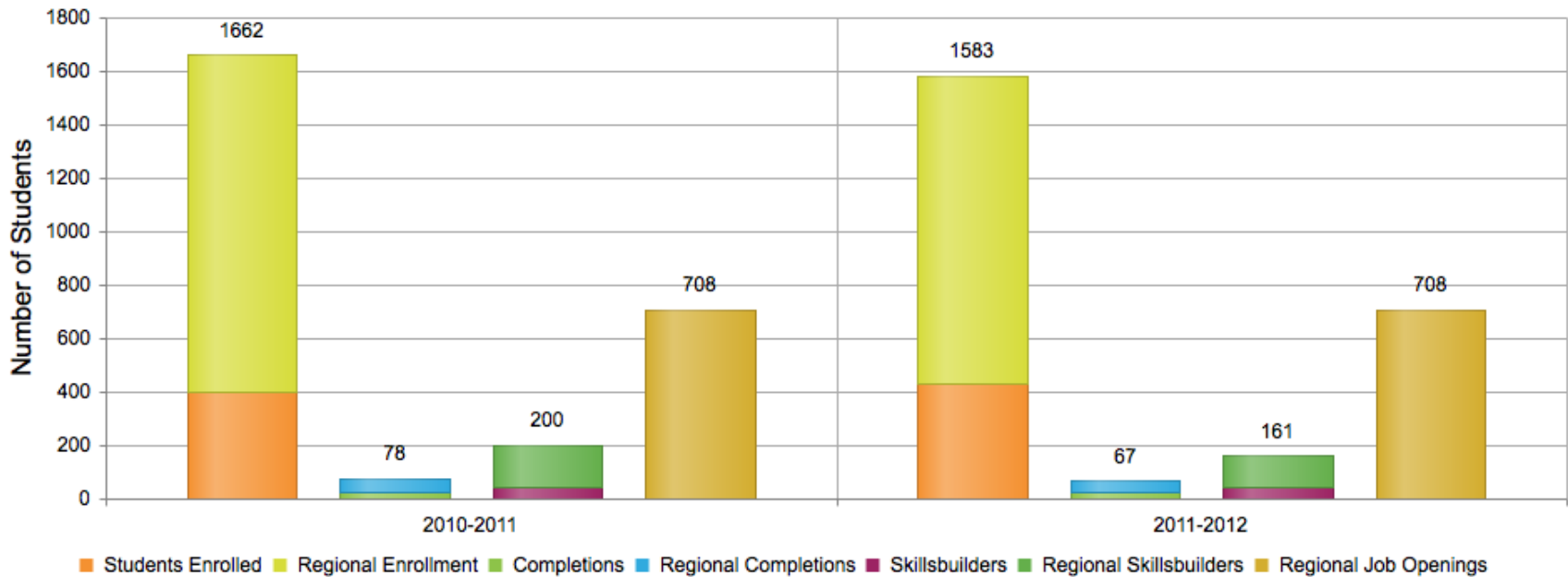
Reports

### Reports for Manufacturing and Industrial Technology at Santa Ana College

Print Report

Export All Metrics

Are the number of students being educated in alignment with available jobs?



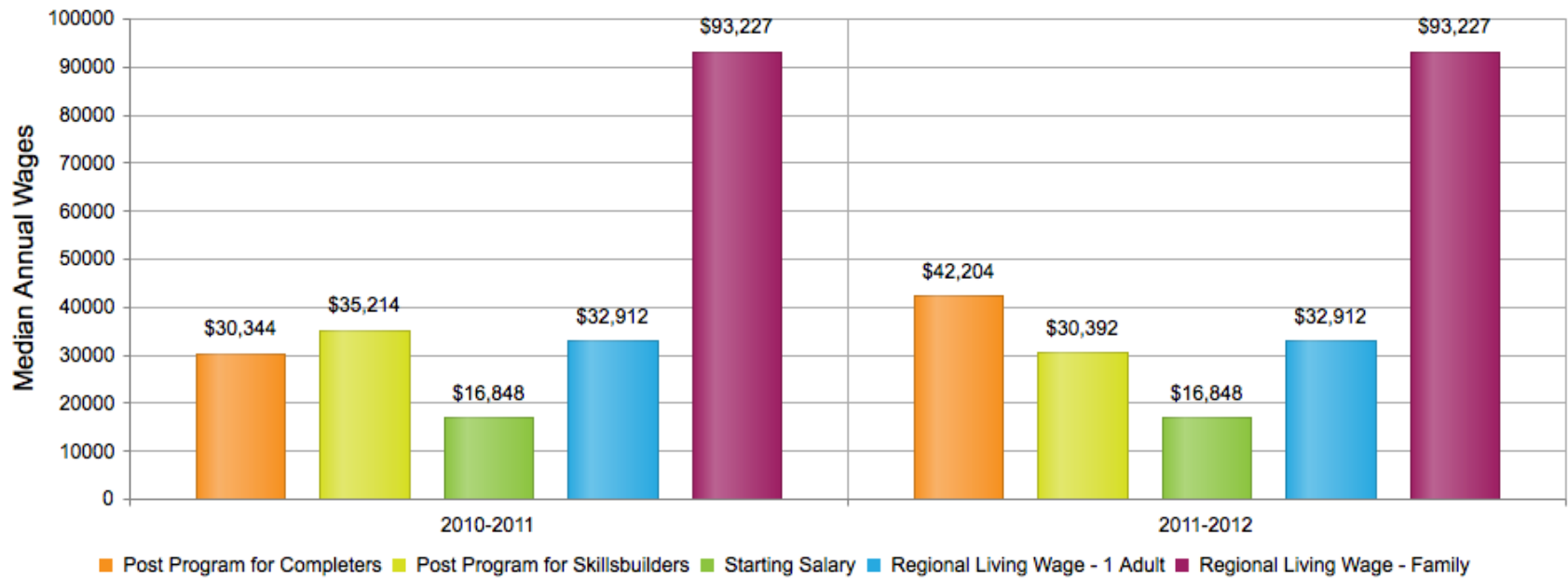




## Program Review Example 2



Are students making reasonable wages?



[Explain Methodology](#)

Year	Post Program for Completers	Post Program for Skillsbuilders	Starting Salary	Regional Living Wage - 1 Adult	Regional Living Wage - Family
2010-2011	\$30,344	\$35,214	\$16,848	\$32,912	\$93,227
2011-2012	\$42,204	\$30,392	\$16,848	\$32,912	\$93,227



# What Should I do Next

- Try out the Launchboard and get a password – ALL CTE faculty at a CA Community College are entitled to Launchboard Access
- Get to know your DSN, SN and others so you can get tied into the system, find out about grants, help improve programs for students
- Have a voice in how accountability tools work for faculty
- Send your questions and comments [launchboard@cccco.edu](mailto:launchboard@cccco.edu)



## Find Out More

- Visit the Doing What Matters website
  - [www.doingwhatmatters.ccco.edu](http://www.doingwhatmatters.ccco.edu)
- Test out a demo of the LaunchBoard and get a password
  - [www.calpassplus.org/Launchboard](http://www.calpassplus.org/Launchboard)
- Dianna Chiabotti [DCHIABOTTI@napavalley.edu](mailto:DCHIABOTTI@napavalley.edu)
- Renah Wolzinger [RWOLZIN@wested.org](mailto:RWOLZIN@wested.org)