

ORANGE COUNTY REGIONAL CONSORTIUM

WORKFORCE
DEVELOPMENT ALLIANCE

CTE REGIONAL COLLABORATIONS OC REGIONAL CONSORTIUM SEPTEMBER 21, 2023



ADVANCED

MANUFACTURING

CALIFORNIA COMMUNITY COLLEGE REGIONAL CONSORTIA

ORANGE
COUNTY
REGIONAL
CONSORTIUM

WORKFORCE
DEVELOPMENT ALLIANCE

California Community Colleges are organized into ten economic regions, served by eight consortia that were established in 1984 [Title 5, Section 55130(b)(8)E] . The Regional Consortia of Career Education faculty and administrators from community colleges are charged with:



Establishing regional strategic priorities.



Administering state and federal funding.



Forming industry partnerships and public private partnerships.



Reviewing curriculum and recommending new applications for credit Career Education programs.



Administering and implementing the Economic and Workforce Development/Career Education Initiatives from the CCCCCO and WEDD.

ORANGE COUNTY REGIONAL CONSORTIUM 2023-2025 FUNDING STRUCTURE

2023-2025 OCRC Funding Structures	Allocation	Allocation to Projects	Allocation to FA Indirect/Admin	Allocation to RC Admin/Ops
EWD/Employer Engagement	\$1,099,501	\$602,610 <i>(\$200,870)</i>	\$42,289 (4%)	\$454,602
Perkins (Regional Consortium Base Funds)	\$245,353	\$0.00	\$9,437 (4%)	\$235,916
Strong Workforce Program Regional Base (83%)	\$8,705,346	\$8,270,079	\$174,107 (2%)	\$261,160 (3%)
Strong Workforce Program Regional Incentive (17%)	\$1,807,371	\$1,717,002	\$25,893 (2%)	\$64,476 (3%)
Strong Workforce Program K12 1%	\$104,716	\$0.00	\$52,358 (50%)	\$52,358 (50%)
Strong Workforce Program K14 TAP	\$110,793	\$0.00	\$4,261 (4%)	106,532
Total Allocations	\$12,073,080.00	\$10,589,691.00	\$308,345.00	\$1,175,044.00

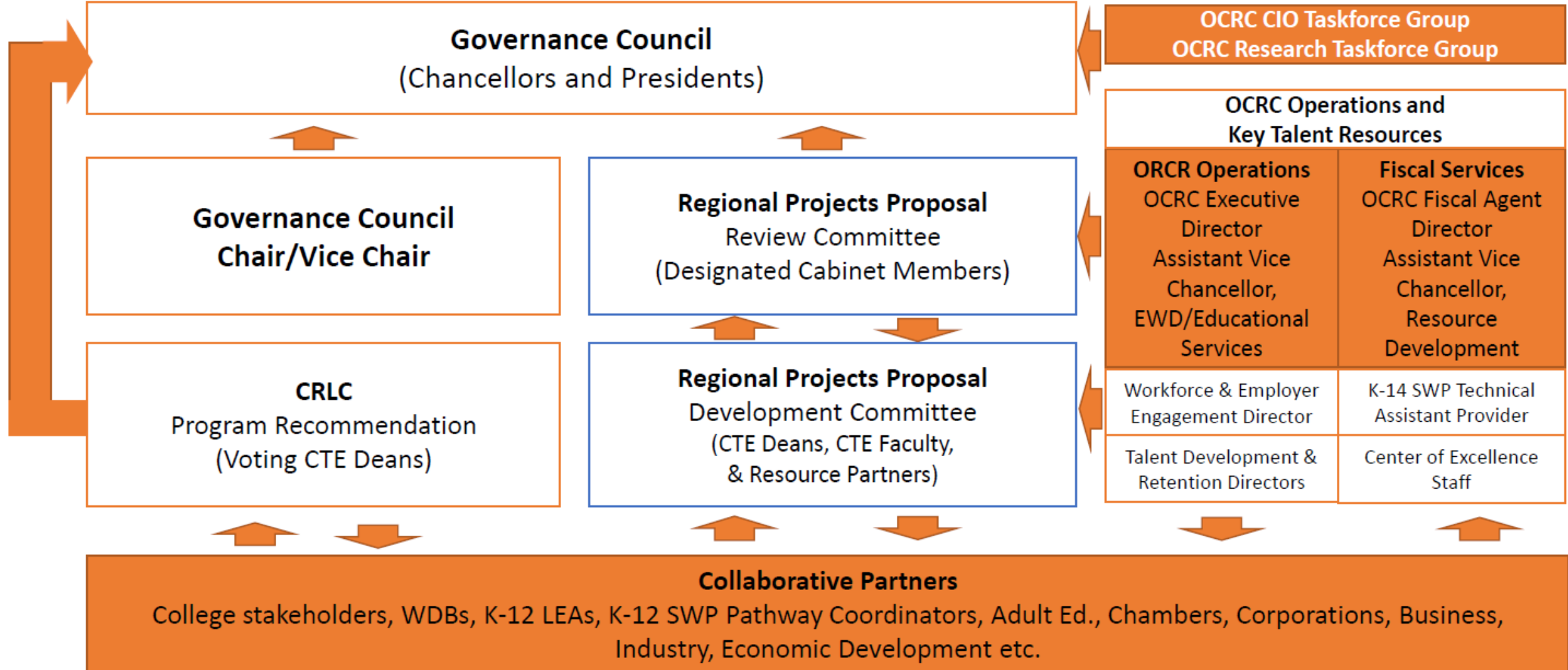
Based on Final Allocations

REGIONAL COLLABORATION AND COORDINATION GRANT OBJECTIVES

Two Components

Regional Collaboration/Coordination	Employer Engagement
Employer Engagement Regional Strategy	RSCCD Lead: WBL, Apprenticeships, Internships, and Faculty Externships
Develop and Support Career Pathways Programs	CCCD Lead: Career Placement
Increase Middle-Skill, Industry-Valued Credentials	NOCCCD Lead: Comprehensive Supports & Pathways, APL, and Articulation
Target Unemployed and Low-Income Residents	SOCCCD Lead Industry Training and Education Needs
Increase Completions, Graduation Rates, and Reduce Units	

Orange County Regional Consortium Governance Structure 4.0 Version



Role of Faculty in the Regional Consortium



NEW PROGRAM RECOMMENDATIONS

What does the LMI say about the need of new career education programs in terms of supplying completers?

Is there a saturation of completers?

Is there a gap in supply and/or demand?



INSTRUCTION

How might SWP funds enhance the quality of instruction and student career readiness for career education across the region?

How might you create economies of scale with career education?



CAREER TRANSITION

How might SWP funds further support student transition from the classroom into apprenticeships, internships, on-the-job training and living wage occupations?

Are you aware of the OCRC Employer Engagement Regional Strategies and the Key Talent Team (resources available to you)?



DEVELOPMENT

How might SWP funds support regional faculty growth and development?

By department, discipline, and/or program?

GOVERNANCE COUNCIL MEMBERS

Name	Title	District Institution
Dr. Whitney Yamamura	Chancellor, Governance Council Member	Coast Community College District
Dr. Vince Rodriguez	President	Coastline College, Coast CCD
Dr. Meridith Randall	Interim President	Golden West College, Coast CCD
Dr. Angelica Suarez	President	Orange Coast College, Coast CCD
Dr. Byron D. Clift Breland	Chancellor, Governance Council Chair	North Orange County Community College District
Dr. JoAnna Schilling	President	Cypress College, North Orange County CCD
Dr. Cynthia Olivo	President	Fullerton College, North Orange County CCD
Ms. Valentina Purtell	President	North Orange Continuing Education, North Orange County CCD
Mr. Marvin Martinez	Chancellor, Governance Council Vice Chair, OCRC Fiscal Agent CEO	Rancho Santiago Community College District
Dr. Annebelle Nery	President	Santa Ana College, Rancho Santiago CCD
Dr. Jeannie Kim	President	Santiago Canyon College, Rancho Santiago CCD
Dr. Julianna Barnes	Chancellor, Governance Council Member	South Orange County Community College District
Dr. John Hernandez	President	Irvine Valley College, South Orange County CCD
Dr. Elliot Stern	President	Saddleback College, South Orange County CCD

GOVERNANCE COUNCIL RESOURCE TABLE

Name	Title	Organization	Role
Dr. Adriene “Alex” Davis	Assist. Vice Chancellor/EWD/Educational Services	Rancho Santiago Community College District	OCRC Executive Director/Chair
Ms. Sarah Santoyo	Assist. Vice Chancellor/Educational Services	Rancho Santiago Community College District	OCRC Fiscal Agent Director
Ms. Ruth Cossio-Muniz	Interim Regional Director	Rancho Santiago Community College District	OCRC Workforce & EE Director
Mr. Michael Sacoto	Regional Director	Rancho Santiago Community College District	K14 SWP Technical Assist. Provider
Dr. Jorge Saucedo-Daniel	Regional Director	Rancho Santiago Community College District	Talent Dev. & Retention Director
Dr. Jesse Crete	Director, EWD/Educational Services	Rancho Santiago Community College District	OCRC Center of Excellence
Mr. Jacob Poore	Research Analyst, EWD/Educational Services	Rancho Santiago Community College District	OCRC Center of Excellence
Ms. Maria Madrigal	Executive Secretary, EWD/Educational Services	Rancho Santiago Community College District	OCRC Executive Secretary
Ms. Marbella Ruiz	Administrative Secretary, EWD/Educational Services	Rancho Santiago Community College District	OC Administrative Secretary
Ms. Lupe Aramburo	Administrative Secretary	Rancho Santiago Community College District	OCRC FA Administrative Secretary
Ms. Elizabeth Arteaga	Dean, Business & Career Education	Santiago Canyon College, CRLC Member	OCRC Employer Engagement Lead
Mr. John Jaramillo	Dean, Economic and Workforce Development & Business Science	Saddleback College, CRLC Member	OCRC Employer Engagement Lead
Mr. Ken Starkman	Dean, Technology and Engineering Division	Fullerton College, CRLC Member	OCRC Employer Engagement Lead
Dr. Jon Caffery	Regional Director	Saddleback College	Talent Dev. & Retention Director
Ms. Stephanie Feger	Regional Director	Coast Community College District	Talent Dev. & Retention Director
Mr. Ferdinand Santos	Regional Director	Fullerton College	Talent Dev. & Retention Director
OCRC Members	College Resource Leadership Council	10 Community College Institutions	Voting Members

GOVERNANCE COUNCIL RESOURCE TABLE

Name	Title	Organization	Role
Dr. Andreea Serban	Vice Chancellor of Educational Services and Technology	Coast Community College District	Resource Member
Dr. Cherry Li-Bugg	Vice Chancellor of Educational Services and Technology	North Orange County Community College District	Resource Member
Dr. Enrique Perez	Vice Chancellor, Educational Services	Rancho Santiago Community College District	Resource Member/OCRC Fiscal Agent
Dr. Christopher McDonald	Vice Chancellor of Education and Technology	South Orange County Community College District	Resource Member
Christopher Bishop	District Director, Research, Planning & Data Management	Coast Community College District	OCRC Research Taskforce Group Member
Gabrielle Stanco	District Director, Research, Planning & Data Management	North Orange County Community College District	OCRC Research Taskforce Group Member
Nga Pham	Executive Director, District Research, Planning & Institutional Effective	Rancho Santiago Community College District	OCRC Research Taskforce Group Member
Denice Inciong	Director, Research, Planning and Data Management	South Orange County Community College District	OCRC Research Taskforce Group Member
Dr. Isela Ocegueda	Chief Instructional Officer	Coastline College	OCRC CIO Taskforce Group Member
Dr. Kathleen Reiland	Chief Instructional Officer	Cypress College	OCRC CIO Taskforce Group Member
Dr. Rosé Ramón Núñez	Chief Instructional Officer	Fullerton College	OCRC CIO Taskforce Group Member
Dr. Kay Nguyen	Chief Instructional Officer	Golden West College	OCRC CIO Taskforce Group Member
Dr. Rick Miranda	Chief Instructional Officer	Irvine Valley College	OCRC CIO Taskforce Group Member
Dr. Karen Bautista	Chief Instructional Officer	North Orange Continuing Education	OCRC CIO Taskforce Group Member
Dr. Michelle Grimes	Chief Instructional Officer	Orange Coast College	OCRC CIO Taskforce Group Member
Dr. Tram Vo-Kumamoto	Chief Instructional Officer	Saddleback College	OCRC CIO Taskforce Group Member
Dr. Jeff Lamb	Chief Instructional Officer	Santa Ana College	OCRC CIO Taskforce Group Member
Dr. Jason Parks	Chief Instructional Officer	Santiago Canyon College	OCRC CIO Taskforce Group Member

GOVERNANCE COUNCIL STANDING QUARTERLY BUSINESS MEETINGS

Dates	Time
March 22, 2023 (Spring Summit)	12:00PM – 3:00PM
June 7, 2023	12:00PM – 3:00PM
August 23, 2023	12:00PM – 3:00PM
November 8, 2023	12:00PM – 3:00PM

REGIONAL CONSORTIUM MEETINGS

Meeting Unit	Meeting Frequency
Regional Consortium Business Meeting	Every 3 rd Thursday from 9:00AM – 10:00AM (*July)
Regional Consortium Collaborative Meeting	Every 3 rd Thursday from 10:00AM – 11:30AM (*July/Dec.)
Regional Consortium Review Committee	Typically Two to Three Times Per Fiscal Period
Regional Consortium Development Committee	Typically Three to Four Times Per Fiscal Period
OCRC Dean's Meeting	First Thursday from 9:00AM – 11:00AM
OCRC Research Taskforce Group	Quarterly
OCRC CIO Taskforce Group	As commissioned by Governance Council

STRONG WORKFORCE PROGRAM

- **Orange County Regional Consortium 23-25 Allocation (\$10,512,717)**
 - 40% of the Strong Workforce Program allocations is distributed through the regional consortia for regional collaboration.
 - 60% of the Strong Workforce Program allocations is distributed through the community college districts and to the colleges for local career education.
 - 83% - Base Allocation (\$8,705,346)
 - 17% - Incentive Allocation (\$1,807,371)

STRONG WORKFORCE PROGRAM

Strong Workforce Legislation

- 1.** Shall ensure community college career technical education and workforce development courses, credentials, certificates, degrees, programs, and pathway offerings are responsive to the needs of employers, workers, civic leaders, and students.
- 2.** Shall collaborate with other public institutions, including, but not limited to, local educational agencies, adult education consortia, local workforce development boards, and interested California State University and University of California Institutions.
- 3.** Shall collaborate with civic representatives, representatives from the labor community, and economic development and industry sector leaders within the region.
- 4.** Shall include collaborative entities and persons identified above in planning meetings, provide them with adequate notice of the project consortium's proposal decisions, and solicit, consider, and respond to comments from them regarding the project consortium's proposed decisions.

STRONG WORKFORCE PROGRAM

Strong Workforce Legislation Continue

5. Collaborative efforts shall focus on evidence-based decision-making and student success with workforce outcomes aligned with the performance accountability measures of the federal Workforce Innovation and Opportunity Act (Public Law 113-128), and closing labor market and employment gaps. Each project consortium shall strive to align program programmatic offerings in the most effective and efficient manner to avoid duplication of effort and streamline access to services, and education and training opportunities.

6. Community college districts and other entities participating in a consortium are encouraged to develop long-term partnerships with private sector employers and labor partners to provide coordinated courses, programs, and pathways with employer involvement in the assessment, planning, and development of community college career technical education courses, programs, and pathways. To the extent possible, employer partnerships should build upon regional partnerships formed pursuant to the federal Workforce Innovation and Opportunity Act (Public Law 113-128) and other state or federal programs.

STRONG WORKFORCE PROGRAM

Strong Workforce Legislation Continued

7. Community college districts and other entities participating in a consortium are encouraged to develop and work closely with public and private organizations that offer workforce development programs and pathways to young adults with autism and other developmental disabilities to provide a comprehensive approach to address workforce readiness and employment.

STRONG WORKFORCE PROGRAM

- ***Governance Council Strong Workforce Regional Project Guidance***

- The Orange County Regional Consortium (OCRC) Strong Workforce Program (SWP) Regional Projects must be **data-informed** and **equity-focused** while increasing student enrollment and completion, leveraging regional projects, engaging Orange County employers, and increasing student employment outcomes that measure return on SWP investments.

- **Regional Priorities and LMI**

- *Artificial Intelligence Technology*
- *Competency-Based Education*
- *Credit for Prior Learning*
- *CTE Dual Enrollment*
- *Employer Engagement*
- *Funding Structure Investments*
- *Work Experience Education*

ECONOMIC AND WORKFORCE DEVELOPMENT

- **Allocation**

- \$1,099,501

- **Employer Engagement Regional Strategy**

- *Workplan*

- *Objective 1: Apprenticeship, Faculty Externship, Internship, Work-Based Learning*

- *Objective 2: Career Placement*

- *Objective 3: Assessment of Prior Learning, Articulation, Comprehensive Support & Pathways*

- *Objective 4: Industry Training & Education Needs*

- ***Regional Workforce and Employer Engagement Director***

- ***Talent Development & Retention Directors***

- ***Orange County Regional Consortium Employer Advisory Work Group***

- *Employer Development*

- *Talent Development*

- *Job Placement Liaisons*

ORANGE COUNTY REGIONAL CONSORTIUM

WORKFORCE DEVELOPMENT ALLIANCE

OCRC Member Institutions

- Coastline College
- Cypress College
- Fullerton College
- Golden West College
- Irvine Valley College
- North Orange Continuing Education
- Orange Coast College
- Saddleback College
- Santa Ana College
- Santiago Canyon College



Cypress College

